

### CBD15/20-A/BH CBD15/20-A/BLiH 步行式电动托盘搬运车 Electric pallet truck

#### 产品性能特点:

- 整车简洁、可靠、易操作, 标配直立行走功能, 适合在狭小空间作业;
- 整车经过充分强化验证, 可靠耐用;
- 预留电磁制动解锁装置, 保证车辆出现故障时能移走维修;
- 覆盖件采用内部固定方式, 防止碰撞紧固螺栓, 电池拆卸、维修方便;
- 标配内置充电器, 随充随用, 为客户使用提供便利;
- 全金属车身设计, 全新PI造型, 外观新颖, 坚固耐撞;
- 一体化手柄设计, 锂电车型标配智能手柄, (实现故障显示、密码锁、小时计、CAN通讯等) 操作简单舒适;
- 电池容量大, 续航能力强;
- 锂电车型采用手提式锂电池包, 电池更换轻松、便捷;
- 标配急停开关和紧急反向装置, 确保安全;
- 具备断刹车功能, 手柄松开或压到底部, 车辆立即断刹车;
- 智能用电提醒, 两级低电压保护, 一级提醒, 二级限速起升;
- 整车宽配置, 可选配货叉长度、货叉宽度等;
- 可选配平衡轮, 提升车身稳定性;
- 可选配转弯限速, 提升操作安全性。

#### Characteristics:

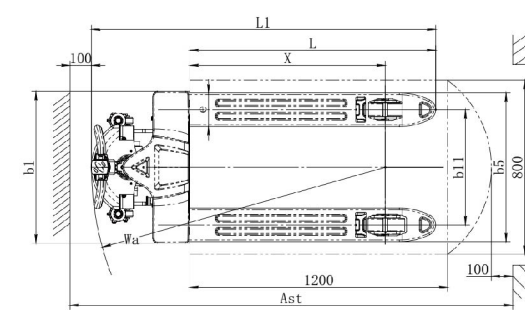
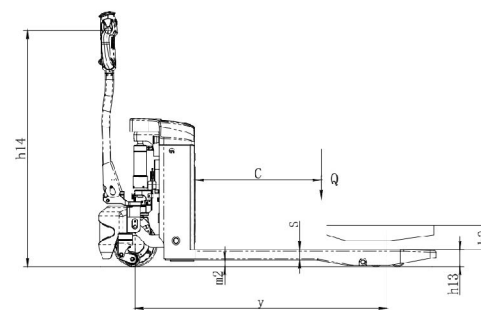
- The vehicle is simple and reliable, easy to operate. It is standard with upright walking function ,suitable for narrow space operation.
- Full experimental verification of the vehicle, reliable and durable;
- Electromagnetic brake unlocking device reversed to ensure that vehicles can be removed in case of the vehicle fails.
- The covering parts are fixed internally to prevent collisions with fastening bolts.The battery is easily to remove and maintain;
- Standard the internal charger, convenient for customers to charge.
- All metal body design, new PI shape, novel appearance, reliable and durable;
- Integrated handle, the lithium type is equipped with a smart handle, ( Display the fault code in real time, coded lock, hour meter, CAN etc. ), operation is simple and comfortable;
- Large battery capacity, strong endurance;
- The lithium type uses a portable lithium battery package, the battery replacement is easy and convenient;
- Standard the emergency stop switch and emergency reverse device to ensure the safety of use;
- With the power-off automatic brake function, the handle is loosen or pressed to the bottom, and the vehicle immediately powered off and braked;
- Intelligent power reminder, two-level low voltage protection, one-level reminder, two-stage speed reduction limit lifting;
- The sufficient configuration of the vehicle, optional fork length, optional fork width, etc.
- Optional balance wheels to improve body stability;
- Optional turning speed limit to improve operational safety.



锂电池动力

#### 制造商和技术参数 Manufacturer's Data and Design Characteristics

特性 Characteristics		HELI							
1.01 制造商 Manufacturer	Model	CBD15		CBD20		CBD15		CBD20	
1.02 型号	Configuration number	A/BH		A/BH		A/BLiH		A/BLiH	
1.03 配置号	Type of operation	步行式 Pedestrian propelled		步行式 Pedestrian propelled		步行式 Pedestrian propelled		步行式 Pedestrian propelled	
1.04 操作方式	Rated capacity Q	kg		kg		kg		kg	
1.05 额定承载能力	Load center distance c	mm		mm		mm		mm	
1.06 载荷中心距	Lift height h3	mm		mm		mm		mm	
1.07 提升高度	Front overhang x	mm		mm		mm		mm	
1.08 前悬距	Wheelbase y	mm		mm		mm		mm	
1.09 轴距	Tyres								
2.01 轮胎	Tyre type	聚氨酯 Polyurethane		聚氨酯 Polyurethane		聚氨酯 Polyurethane		聚氨酯 Polyurethane	
2.02 轮胎类型	Tyre size, driving wheels φ*w	mm		mm		mm		mm	
2.03 轮胎尺寸, 驱动轮	Tyre size, loading wheels φ*w	mm		mm		mm		mm	
2.04 轮胎尺寸, 承载轮	Tyre size, additional wheels φ*w	mm		mm		mm		mm	
2.05 轮胎尺寸, 辅助轮	Wheels, number front/rear (x=driven wheels)								
2.06 车轮数量, 前/后 (x=驱动轮)	track width, loading side b11	mm		mm		mm		mm	
2.06 轮距, 承载端	Dimensions								
3.01 整车长度	Overall length L1	mm		mm		mm		mm	
3.02 整车宽度	Overall width b1	mm		mm		mm		mm	
3.03 货叉尺寸	Fork dimension s/φ	mm		mm		mm		mm	
3.04 货叉外宽	Width of forks b5	mm		mm		mm		mm	
3.05 货叉最低高度	Lowered height h13	mm		mm		mm		mm	
3.06 轴距中心处离地间隙	Min.Ground clearance m2	mm		mm		mm		mm	
3.07 操作位置手柄杆最小/最大高度	Height drawbar in driving position min./max h14	mm		mm		mm		mm	
3.08 通道宽度: 1000x1200托盘 (1200跨货叉放置)	Aisle width with pallet 1000x1200 across forks Ast	mm		mm		mm		mm	
3.09 通道宽度: 800x1200托盘 (1200沿货叉放置)	Aisle width with pallet 800x1200 along forks Ast	mm		mm		mm		mm	
3.10 转弯半径	Min.Turning radius Wa	mm		mm		mm		mm	
性能 Performance Data	Travel speed (laden/unladen)	km/h		km/h		km/h		km/h	
4.01 行驶速度 (满载/空载)	Lift speed (laden/unladen)	mm/s		mm/s		mm/s		mm/s	
4.02 起升速度 (满载/空载)	Lowering speed (laden/unladen)	mm/s		mm/s		mm/s		mm/s	
4.03 下降速度 (满载/空载)	Max.gradeability (laden/unladen)	%		%		%		%	
4.04 最大爬坡能力 (满载/空载)	Service brake type	电磁制动 Electromagnetic brake							
4.05 制动类型	Battery								
5.01 电池和充电器	Battery voltage/rated capacity	V/Ah		V/Ah		V/Ah		V/Ah	
5.02 蓄电池电压/容量	Battery weight	kg		kg		kg		kg	
5.03 蓄电池重量 (±5%)	Charger specification								
5.03 充电器规格	Motor and controller								
6.01 驱动电机功率 (S2-60min)	Driving motor powering (S2-60min)	kW		kW		kW		kW	
6.02 起升电机功率 (S3-15%)	Lifting motor powering (S3-15%)	kW		kW		kW		kW	
6.03 控制器	Controller	嘉晨 Jiachen/肃为 Suwei		前拓 QEXPAND		嘉晨 Jiachen/肃为 Suwei		前拓 QEXPAND	
6.03 重量	Weight								
7.01 总重 (含电池)	Total weight (with battery)	kg		kg		kg		kg	
7.02 桥负载 (满载, 驱动轮/承载轮)	Axle load (laden, front/rear)	kg		kg		kg		kg	
7.03 桥负载 (空载, 前/后)	Axle load (unladen, front/rear)	kg		kg		kg		kg	
其他 Addition data	Type of drive control								
8.01 驱动控制类型	Sound pressure level at the driver's ear	dB(A)		dB(A)		dB(A)		dB(A)	
8.02 驾驶员耳边噪音水平	Steering type								
8.03 转向类型		机械转向 Manual steering		机械转向 Manual steering		机械转向 Manual steering		机械转向 Manual steering	



安徽合力股份有限公司  
ANHUI HELI CO., LTD.  
地址 / 中国 合肥方兴大道668号  
Add / No.668, FangXing Road, Hefei, China  
邮编 (Post Code) / 230000

客服热线 (Customer Service Hotline) / 4001-600761  
服务电话 (Service Tel) / +86-551-63689000, 63648005

\* 本公司保留更改产品设计和规格的权力, 恕不另行通知。  
\* Our products are subject to improvements and changes without notice.